



Bulk Material Handling Products

Xiamen Cafu Mechanical Equipment Co., Ltd

Add: No. 117, Feng shan yi li, Tong 'an District, Xiamen, Fujian, China.

E-mail: sales@xmcafu.com

Tel: +86-592-7010098、+86-18120740098(WhatsApp)



COMPANY PROFILE


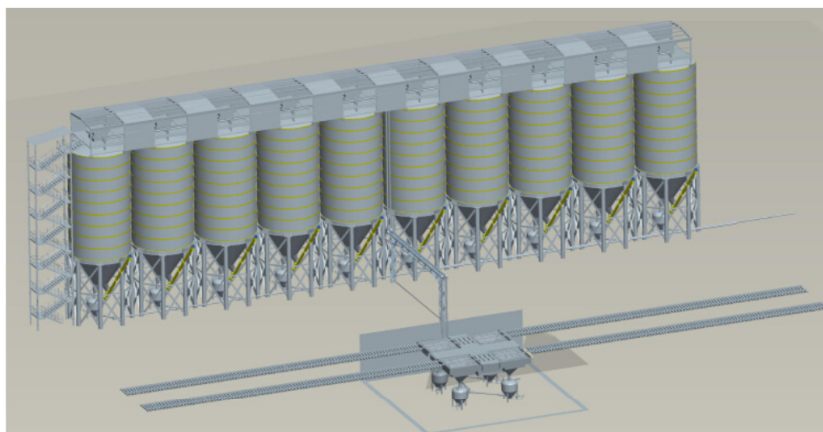
Xiamen Cafu Mechanical Equipment Co., Ltd, focuses on the development and application of bulk material handling products.

The main products are: Metal silo, Powder pneumatic conveying system, Bucket conveyor system, Modular belt conveyor, Apron chain conveyor, Conveyor belt washing systems, Gravel sifter machine, Portable crushing plants, Dry mortar production line, Portable concrete mixing plant, etc.



Committed to providing professional design consulting services and one-stop product integration solutions for global users.

INNOVATION & RESEARCH



5⁺ Professional Engineers

10⁺ Engineering Experience

ADVANTAGE

CAFU provides not only high-quality products, we understand the needs of customers better, and are committed to providing customers with innovative bulk material handling products.

Continuously improve customer experience by managing the entire project life cycle and help global customers succeed.

Compared with traditional silo engineering, CAFU's rapid assembly bulk material handling products, its solutions have the excellent performance of high efficiency, safety, long life and simple maintenance.



long lifespan



Quick assembly



More, Faster, Better, Saving



Customized

pneumatic conveying system for powder



Scope of application

- Thermal power plant
- Kiln Combustion System
- Power plant limestone powder transportation
- All kinds of ash powder conveying

Pneumatic powder conveying pump-upper ash discharge

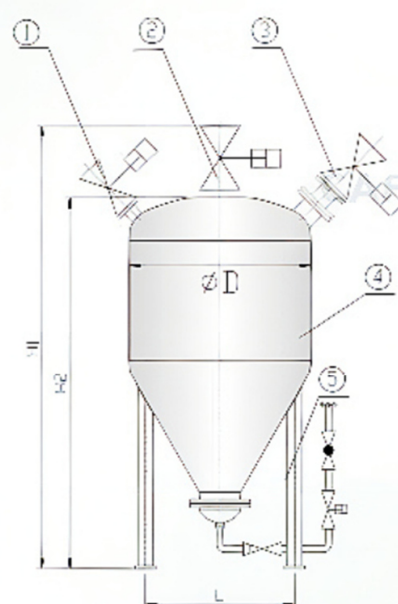


Dense phase pneumatic conveying pump is one of the main equipment in pneumatic conveying system.

The main features of the system:

- 1, Low flow speed and small pipeline wear;
- 2, low energy consumption, low operating cost;
- 3, no dust blocking, automatic operation;
- 4, has a large powder and gas ratio;
- 5, can be long distance transmission, transmission distance up to 1500 meters;
- 6, materials in pipeline transportation, environmental protection, no pollution, no leakage.

Pneumatic powder conveying pump-upper ash discharge



- ① balance valve
- ② feed valve
- ③ discharge hole
- ④ pump body
- ⑤ inlet group



Pneumatic conveyor model size table

type	LD1.0	LD1.5	LD2.5	LD4.0	LD5.0	LD6.0	QSB8.0
H1(mm)	3029	3126	3198	3502	3849	4030	4398
H2(mm)	2389	2486	2558	2862	3209	3390	3758
L(mm)	560	560	660	660	810	810	1010
D(mm)	1023	1219	1623	1823	1823	2023	2231

Pneumatic powder conveying pump-upper ash discharge

Technical parameters of powder conveying system

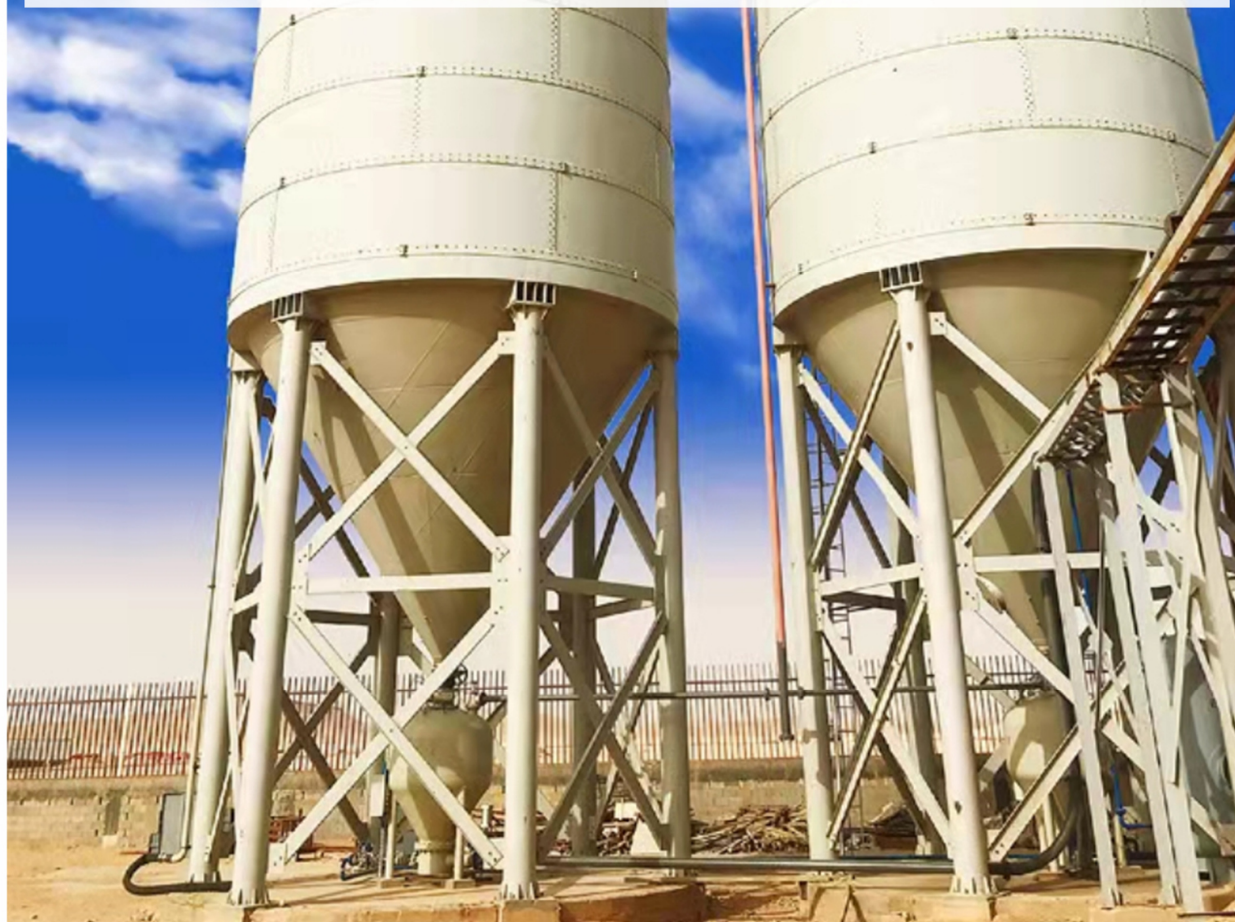
Specification		LD1.0	LD1.5	LD2.5	LD4.0	LD5.0	LD6.0	QSB8.0
Effective volume of pump body	m3	1.0	1.5	2.5	4.0	5.0	6.0	8.0
delivery capacity	m3/h	5~11	7~15	12~20	12~30	13~35	16~40	22~90
total weight	kg	1296	1540	2492	2849	3085	3728	4005
working pressure	Mpa	0.15~0.4(It varies with the transmission distance)						
conveying distance	m	~1500(Refers to the epuivalent distance after conversion)						
Working temperature	℃	-19~200,Working temperature over 120℃ for special products, please explain.						
Main material of pump body	16MnR							

Pneumatic powder delivery pump-lower ash discharge

Pneumatic powder delivery pump-lower ash discharge

This product adopts positive pressure pneumatic conveying mode to transport powdery materials, widely used in fly ash, limestone powder, cement, cement raw material and other materials transportation. Pipelines can be flexibly arranged according to terrain conditions, centralized, dispersed, large height, long-distance transportation. Conveying process is not affected by natural conditions, to ensure that the material is not damp, environmental protection, pollution-free.

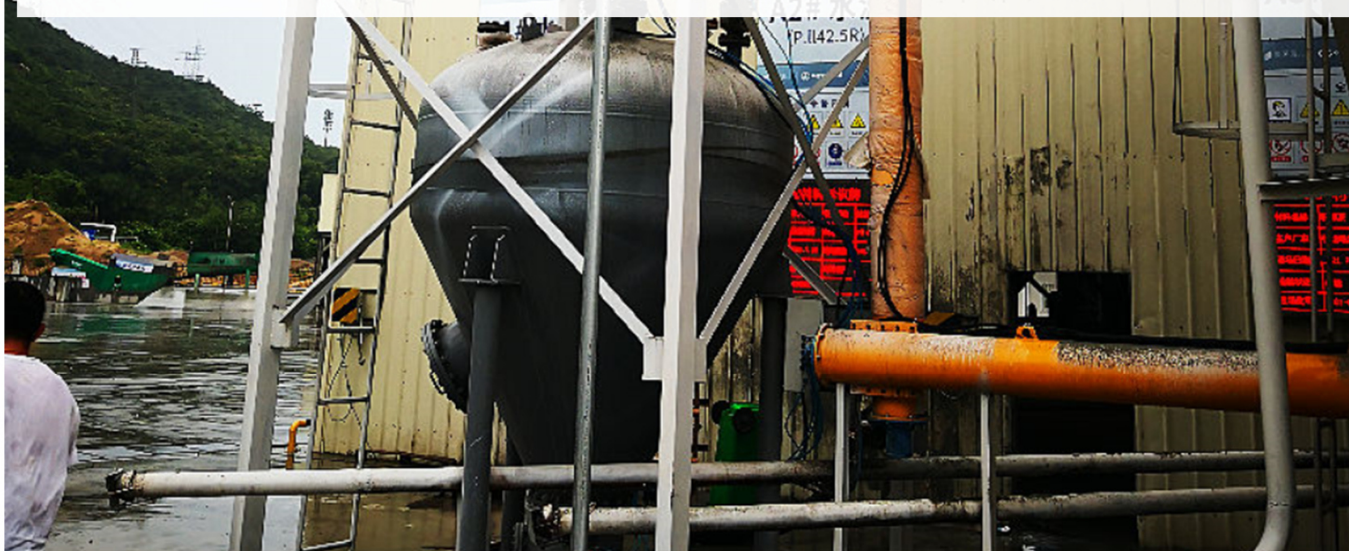
Pneumatic conveying system adopts PLC touch screen control system, which can be controlled automatically or manually. Practice has proved that this equipment is an ideal pneumatic conveying equipment with stable performance, reliable quality and no dust pollution.



Pneumatic powder delivery pump-lower ash discharge

The main features of the powder pneumatic conveying system include:

1. Environmental protection and energy saving: due to reasonable fluidization structure and good fluidization state of materials, the gas consumption is reduced. According to the actual situation, we have improved the production efficiency and reduced the energy consumption after several times of improvement.
- 2, high ash gas ratio: good fluidization effect, less gas consumption, high ash gas ratio. The practical application shows that the equivalent distance is less than 500 meters and the ash/gas ratio can reach more than 30KG(dry ash)/KG(gas).
3. Low impact wear degree of materials on pipelines: due to less air consumption and high ash gas ratio, the flow speed of dry ash materials is low when transported, the service life of valves and pipes will be improved, and the service life of system accessories will be extended.



Pneumatic powder delivery pump-lower ash discharge

Model Specification:

Specification		L-1.0	L-1.5	L-2.5	L-4.0	L-6.0	L-8.0
Effective volume of pump body	m3	1.0	1.5	2.5	4.0	6.0	8.0
delivery capacity	m3/h	5~11	7~15	12~20	12~30	16~40	22~30
displacement of air compressor	m3/m in	5	8	8	10	10~20	20~20
weight	kg	2500	2720	3050	3650	3950	4250
working pressure	Mpa	0.2~0.45(It varies with the transmission distance)					
conveying distance	m	~1500(Refers to the equivalent distance after conversion)					
working temperature	℃	-19~200,Working temperature over 120℃ for special products,please explain					
main material of pump body	16MnR						

Energy Saving Continuous Delivery Pump



The equipment has the characteristics of compact structure, flexible layout, low wind pressure, low energy consumption, easy operation, reliable operation and so on. It is a product with high performance in low-pressure continuous powder conveying equipment.

Widely used in power plant fly ash pneumatic conveying system, power plant desulfurization limestone powder pneumatic conveying, cement kiln head, kiln tail powder pneumatic conveying. In the actual use, we have completely solved the other low pressure pump upward leakage gas, leakage lock is not tight.

■ specifications

type	dia (mm)	pitch (mm)	outputs (m ³ /h)	air pressure (MPa)
JSB150	150	150~100	4~10	0.015 ~ 0.24
JSB200	200	150~100	8~40	0.015 ~ 0.24
JSB250	250	190~120	20~75	0.015 ~ 0.24
JSB300	300	220~140	40~120	0.015 ~ 0.24

Low Pressure Continuous Delivery Pump



This product is widely used in medium and short-range ash collection and transportation in power ash removal, building materials transportation, construction sites and other industries. It is an excellent product in solid conveying pumps. It is not limited by terrain and elevation difference, fully enclosed, pollution-free, simple structure and small maintenance. The air source is roots blower or compressed air.

Configuration table

Product Name	type	capacity	entrance	exit	blast capacity
Low Pressure Continuous Delivery Pump	LB30-5	0~5t/h	DN100	DN125	10~15m ³ /min
	LB30-10	5~10t/h	DN125	DN150	15~25m ³ /min
	LB40-15	10~15t/h	DN125	DN170	25~35m ³ /min
	LB40-20	15~20t/h	DN150	DN200	35~45m ³ /min
	LB50-25	20~25t/h	DN200	DN250	45~55m ³ /min

Low Pressure Continuous Pneumatic Conveying System Accessories

